

PART OF SECTION 10, T.6N., R.1E., S.L.B. & M.  
**SPURLOCK SUBDIVISION PLAT 1**

LOTS 1 - 5 AND 16 - 23

IN WEBER COUNTY

SCALE 1" = 100'

TAXING UNIT: 317

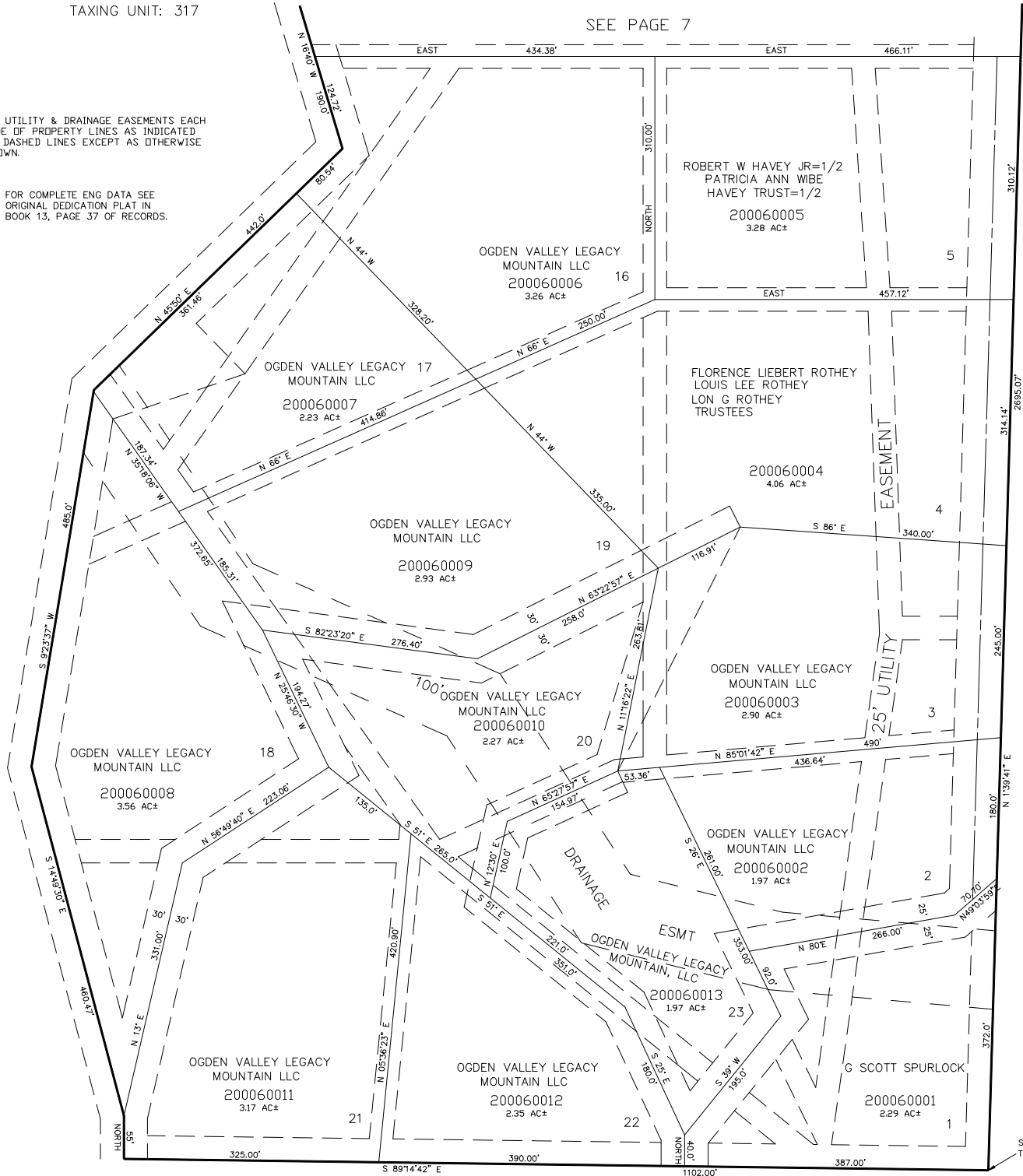
SEE PAGE 7

30' UTILITY & DRAINAGE EASEMENTS EACH  
 SIDE OF PROPERTY LINES AS INDICATED  
 BY DASHED LINES EXCEPT AS OTHERWISE  
 SHOWN.

FOR COMPLETE ENG DATA SEE  
 ORIGINAL DEDICATION PLAT IN  
 BOOK 13, PAGE 37 OF RECORDS.

SEE PAGE 5

SEE PAGE 5-1



S. 1/4 COR. SEC. 10,  
 T.6N., R.1E., S.L.B. & M.